

Whole House Backup Generator Installation

Updated 18-Feb-2022 17:20

By Terry G. Glagowski / W1TR / AFA1DI - 18-Feb-2022 17:20

Originally Presented at the 27-Sep-2012 CMARA Meeting

Again on 17-Feb-2022

by

Terry G. Glagowski

W1TR / AFA1DI

Installation of a whole house backup generator was driven by
the 2011 Halloween Northeaster **Storm Alfred**,
a power outage event in the North East USA that lasted for 8 days in Ashford.

I survived the **Blizzard of 1978** in a residence less than a mile away down the road on Lake Chaffee.
Although there were 3 feet of snow, there were no power outages!

The author and XYL originally had plans for a whole house generator when the house was built in 2004,
but deferred the project due to cost since there had only been a handful of power outages from 2004 to 2011,
the longest of which was 6 hours

Postscript

Hurricane Sandy arrived on 27 Oct 2012 and *this* time we had the generator installed and operating to ride out the storm for 3 days in style
with electrical power. Fortunately there was no other damage.

ALSO: Later thatnight after the 17-Feb-2022 presentation, we lost power at 4:30 AM after several long hits.
The generator DID NOT START, and with 40 KT winds, pouring down rain, dark as coal, I chose NOT to investigate just then.
The next morning at 0900L, I discovered a number of software faults that needed to be cleared before the generator would start.
I cleared them all and let **all systems go**, and will read the manual about the faults, perhaps due to the multiple hits.
Eversource restored power at 12:30 PM, so this was an 8 hour outage.

Halloween: Trick or Treat





Introduction

- System Engineering
 - Generator Type
 - Generator Size
 - Fuel Type
 - Fuel Tank Size
- Acquisition
 - Generator
 - Fuel Tank
- Installation
 - Electrical
 - Generator
 - Fuel
- Operation
- Maintenance
- Conclusion



What Size Generator?

- How much is **your** electric bill?
 - How many KWH in the worst month (Jul-Aug, Jan-Feb) ?
 - Divide KWH by (24*days-in-month) to get average KW for the month (**mine was 3.7 KW worst month**, 2.7 KW average month)
- What are **your** power requirements?
 - Total power requirements for major appliances
 - Include start surge for those with motors
 - Lights, Computers, TVs, Refrigerators, Stoves, etc. (add the wattages)
 - Amateur Radio Equipment (transceivers, amplifiers)
 - I have 2 ½ refrigerators, a freezer, well pump, furnace, A/C, 2 ovens, a stovetop, washer, dryer, computers, TVs ... AND Radios !
- **My** Guestimate:
 - Round the worst case 3.7 KW up to **4 KW for good measure**
 - 4 KW x 3 for the estimated surge + 3KW for Radio = **15 KW ballpark**
 - My Choice: 20K Generac Guardian and automatic 200 amp transfer switch the 15 KW was only \$500 less expensive and the case quality was better for the 20 KW model.

What Kind of Fuel?

- **Gasoline: simple, readily available**
 - hard to store.
 - storage life is not very long.
 - what about supply during an outage?
- **Diesel: less simple, NOT as readily available, use heating oil?**
 - also hard to store.
 - storage life is longer than gasoline but not indefinite.
 - what about the smell?
 - You can use home heating oil but...
will you need a larger oil tank for the furnace then?
- **Propane: readily available, but in quantity by truck delivery only**
 - requires a separate on-site tank.
 - has excellent / long storage life.
 - runs clean.
- **Natural gas: (not available in Ashford, CT)**
 - No storage since it is supplied by the utility via pipe (IF AVAILABLE !).
 - generators are de-rated 10-15% for natural gas.
 - May require new flow valve at street connection to utility main.
 - will the Utility always supply gas during a disaster? (NY, NJ during Sandy)

What Size Fuel Tank?

- Time Requirement: **10 Days** Without Refueling
Halloween 2011 / Storm Alfred Outage was **8+ Days**
- What is the fuel consumption rate?
For $\frac{1}{2}$ load (10KW) 2 gal/hr, for $\frac{1}{4}$ load (5 KW) 1 gal/hr?, for $\frac{1}{8}$ load (2.5 KW ?)
- $10 \text{ Days} * 24 \text{ Hours} * 2 \text{ Gal/Hr} = 480 \text{ gallons !}$
- Tanks come in 100, 250, 300, **500**, 1000 or larger.
- What if the tank isn't 100% full? (5-10 days?)
- But 1 Gal/Hr is more realistic (10-20 days then?)
- A 500 Gal Tank is only filled to 80% (400 Gal!)
- You can't use the last drop in the tank (350 Gal?)

Acquisition: Generator

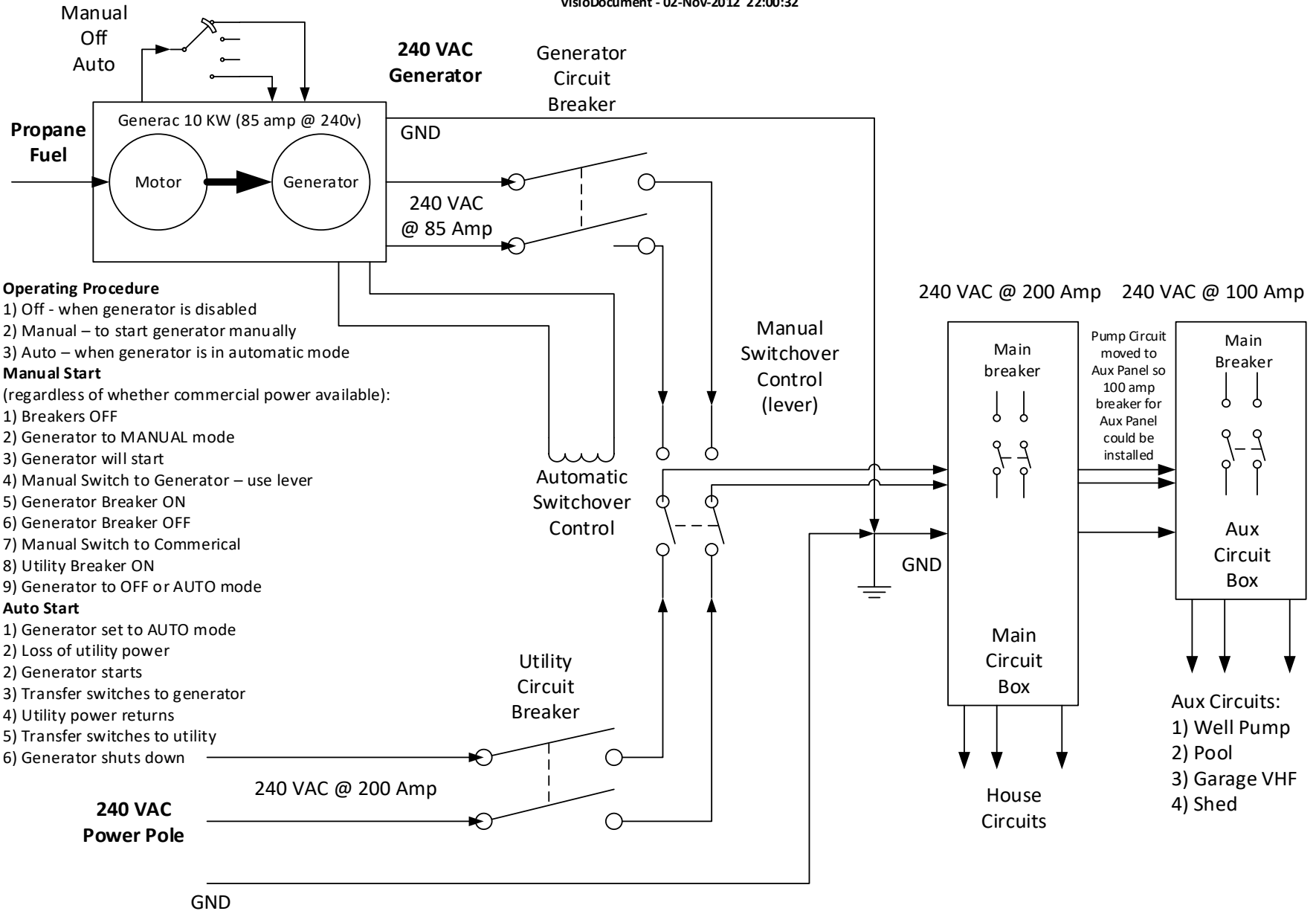
- Brands: **Generac**, Kohler, GE, Cummins Onan, ...
- Vendors: Home Depot, **Lowes**, Electrical Houses
- Lead Time: approximately 3 months
- Cost (20KW Generac, Lowes)
 - \$5500 Generator (20 KW)
(recent Lowes Ad: 20 KW no longer available)
(recent Lowes Ad: 22 KW \$4797 but unavailable)
(recent Lowes Ad: 24 KW \$5997 including automatic transfer switch)
 - \$1000 Automatic Transfer Switch 200 A
 - \$800 Electrical Work
 - \$650 Propane Tank Installation (\$100 / YR rental)
 - \$400 Trench Installation

Acquisition: Propane Tank

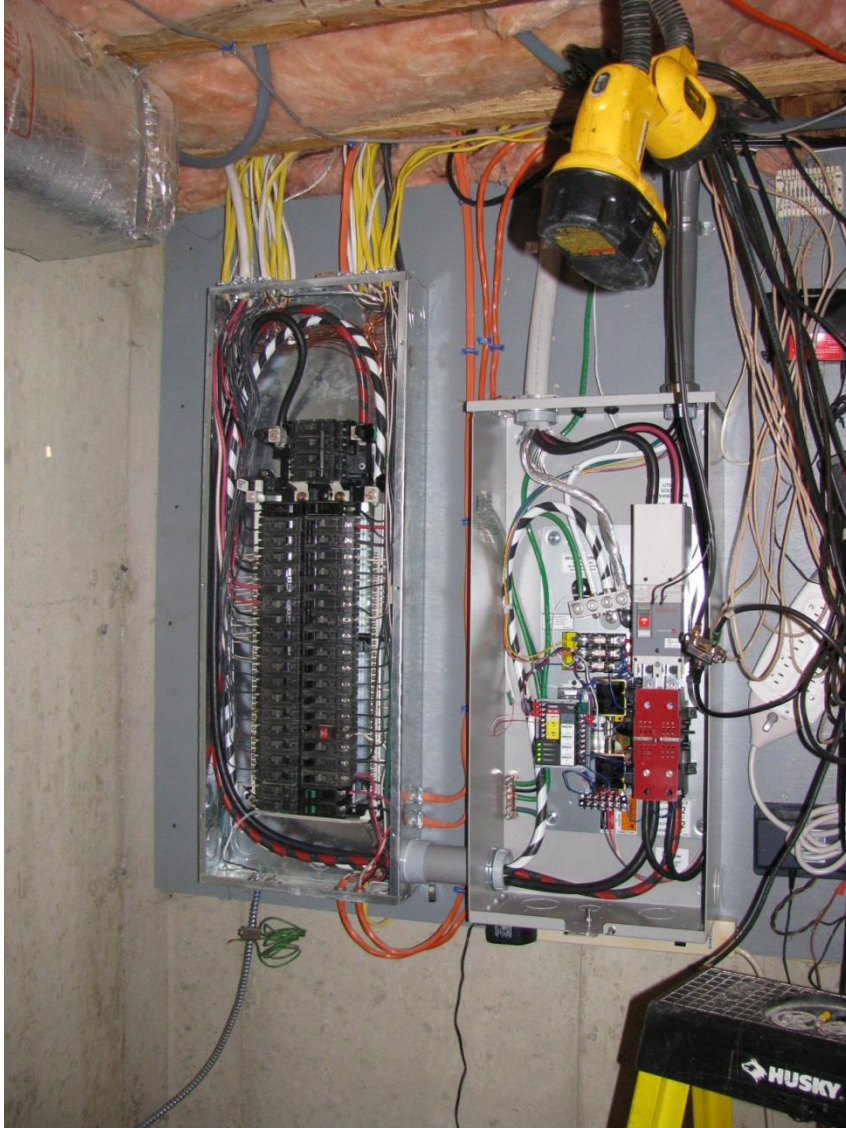
- Many Brands
- Lease from Propane Vendor
also buy heating fuel oil from them to get this deal, and at Co-op price.
Lease from Superior Oil \$100/yr, free with minimum quantity propane.
- Installation Cost: \$650 incl. materials
installed by propane vendor
- Cost to dig fuel line trench: \$400
\$200 equipment rental
\$200 labor (Frank / K1MAA SK)
- Current fuel cost \$2.65/gal (2011), varies
https://www.eia.gov/dnav/pet/pet_pri_wfr_a_EPLLPA_PRS_dpgal_w.htm
[Residential Propane Weekly Heating Oil and Propane Prices \(October - March\) \(eia.gov\)](#)
\$3.70 Feb 2022

Generator Electrical Distribution System

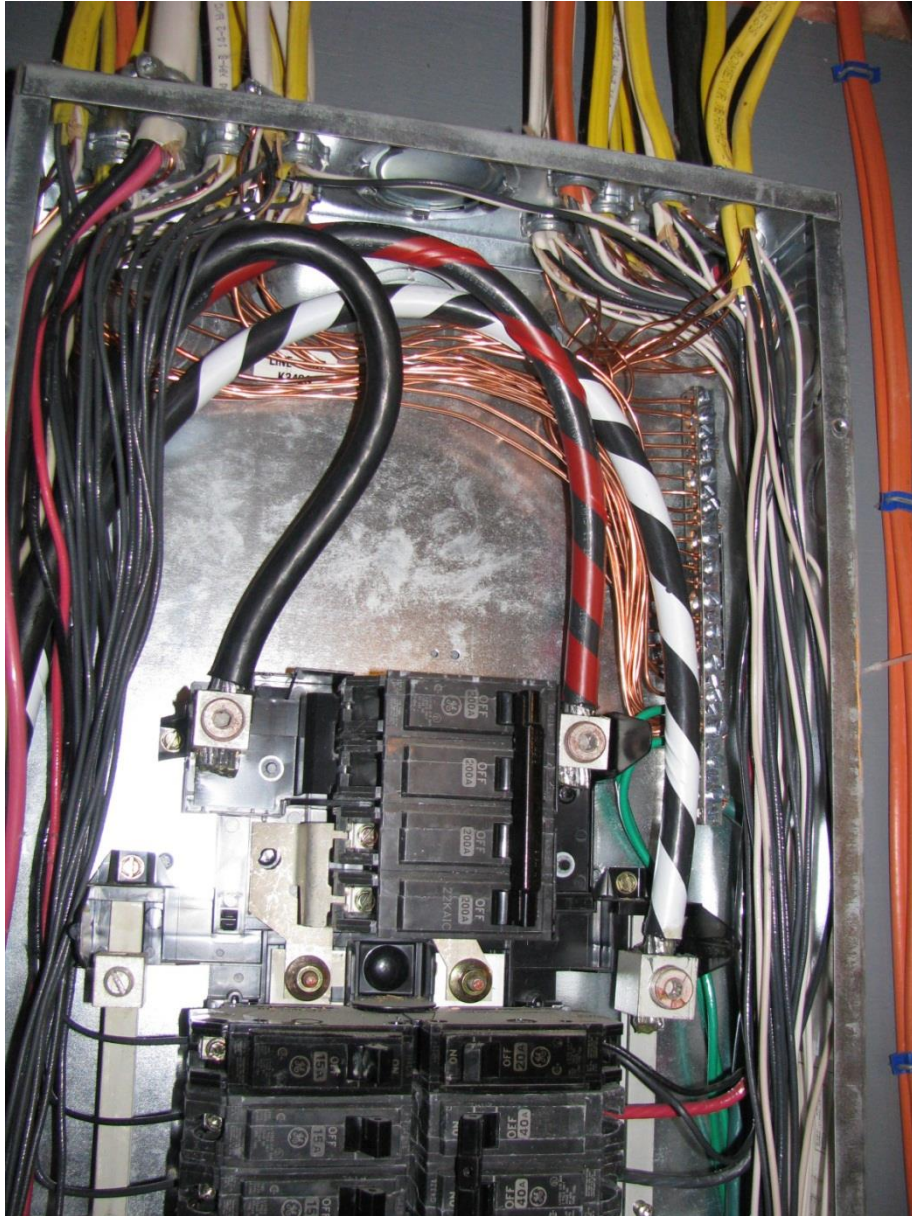
VisioDocument - 02-Nov-2012 22:00:32



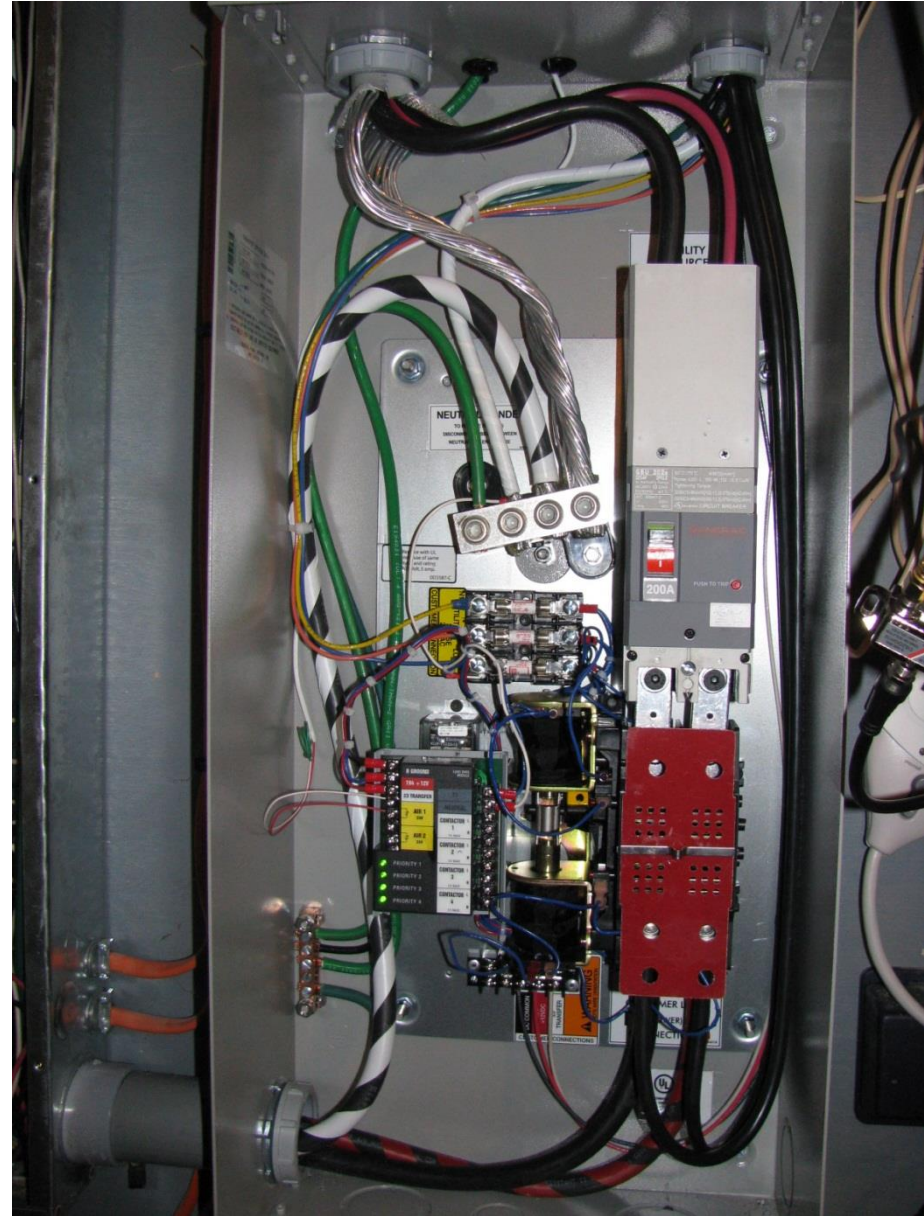
Installation Details: Transfer Switch



Main Box



Transfer Switch



Installation Details: Generator





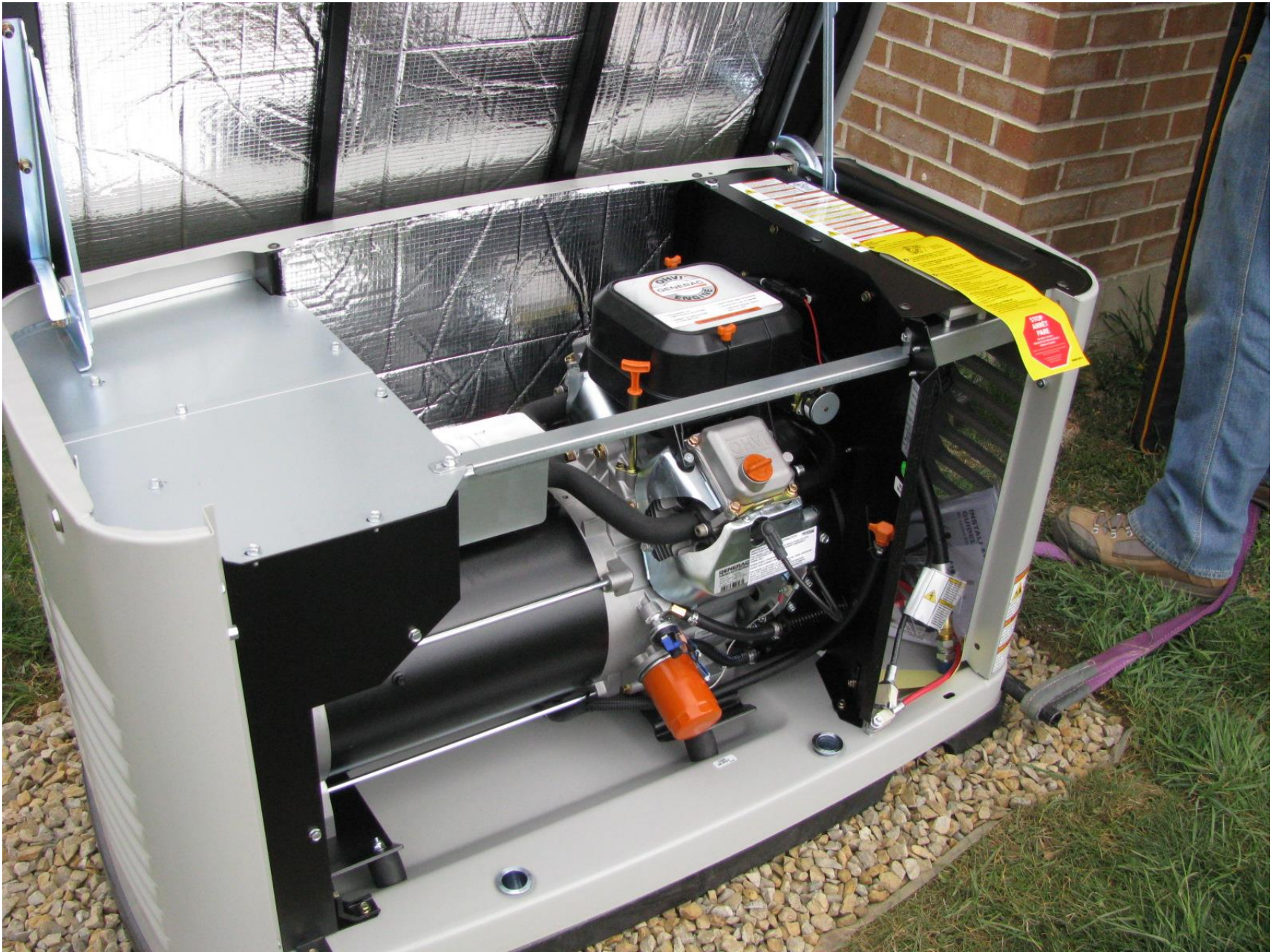












Generator and Motor Specifications

- Model: Generac Guardian 20KW
- Power: 20KW Propane, 18KW Natural Gas
240 VAC @ 85 Amp
Noise: 88 dBA at 6 ft outside
44 dBA inside near wall next to generator, windows closed
Quiet room is about 30 dBA.
- Engine V-Twin GT-999
2cyl, 36hp, 999cc, ohc, 1:9.5 comp ratio
- Oil 1.9 qt
 - SAE 30 above 32°F
 - SAE 10W30 between -10°F to +40°F
 - Synthetic 5W30 below 10°F
- Fuel Consumption
 - 1/2 load - 1.98 ga/hr (specs), 10 KW
 - Full load - 2.90 ga/hr (estimated), 20 KW
 - ¼ load – 0.99 ga/hr (estimated), 5 KW
 - Actual House Load – 1.32 ga/hr (measured), 3 KW load est.

Installation Details: Fuel Line

Call Before You Dig !





Frank, K1MAA (KB1LKB)





Installation Details: Tank









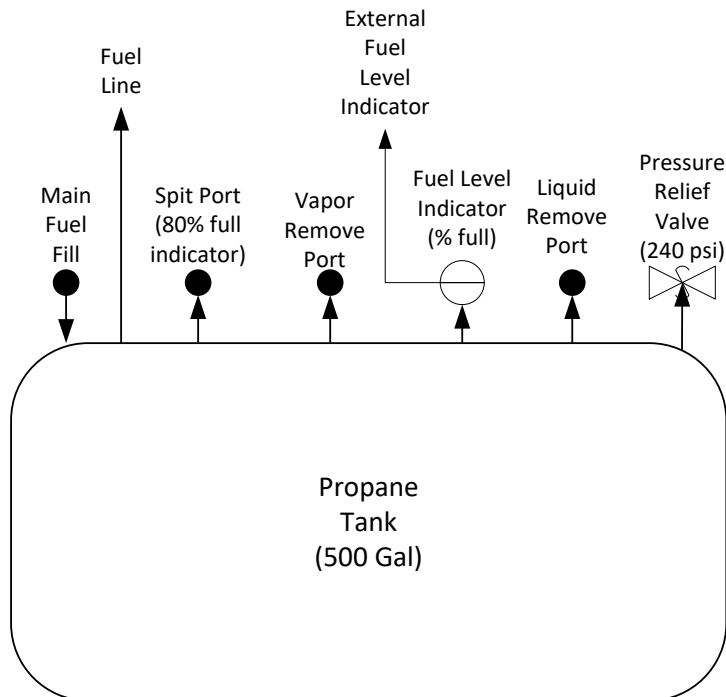
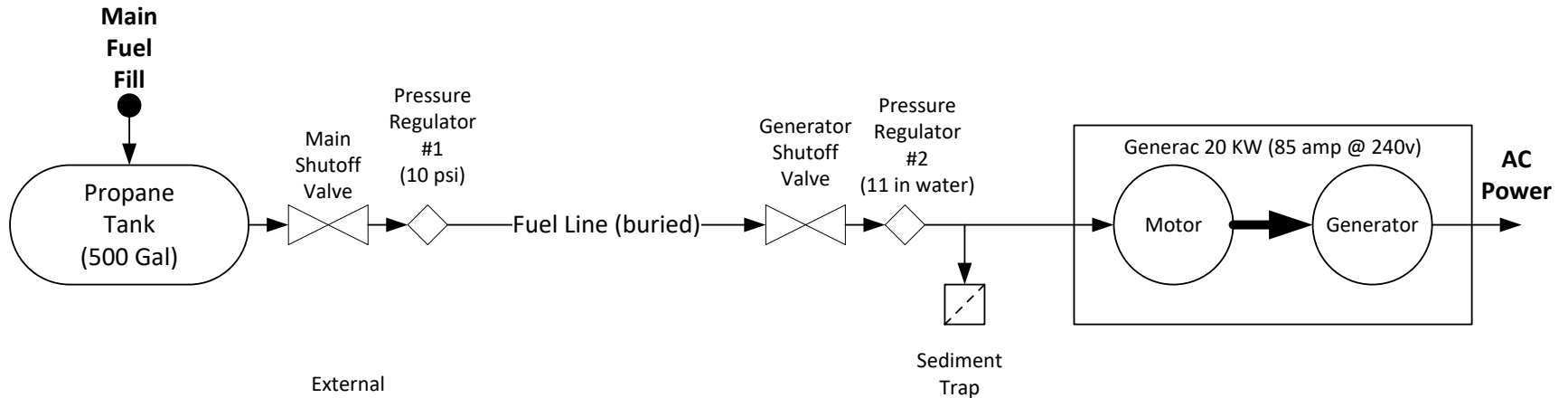






Generator Propane Fuel System

VisioDocument - 26-Sep-2012 21:08:01



Initial Tank Filling Procedure

- 1) Tank comes filled with vacuum
- 2) Remove vacuum,
fill with propane vapor thru Vapor Remove Port
- 3) Fill with propane liquid thru Liquid Remove Port
(\approx 25 gallons)

Routine Tank Filling Procedure

- 1) Refuel when 20% or lower (100 gallons)
- 2) Fill thru Main Fuel Fill until Spit Port indicates 80%
- 3) Observe that Fuel Level Indicator reads 80%

Fuel System Pictorial Detail



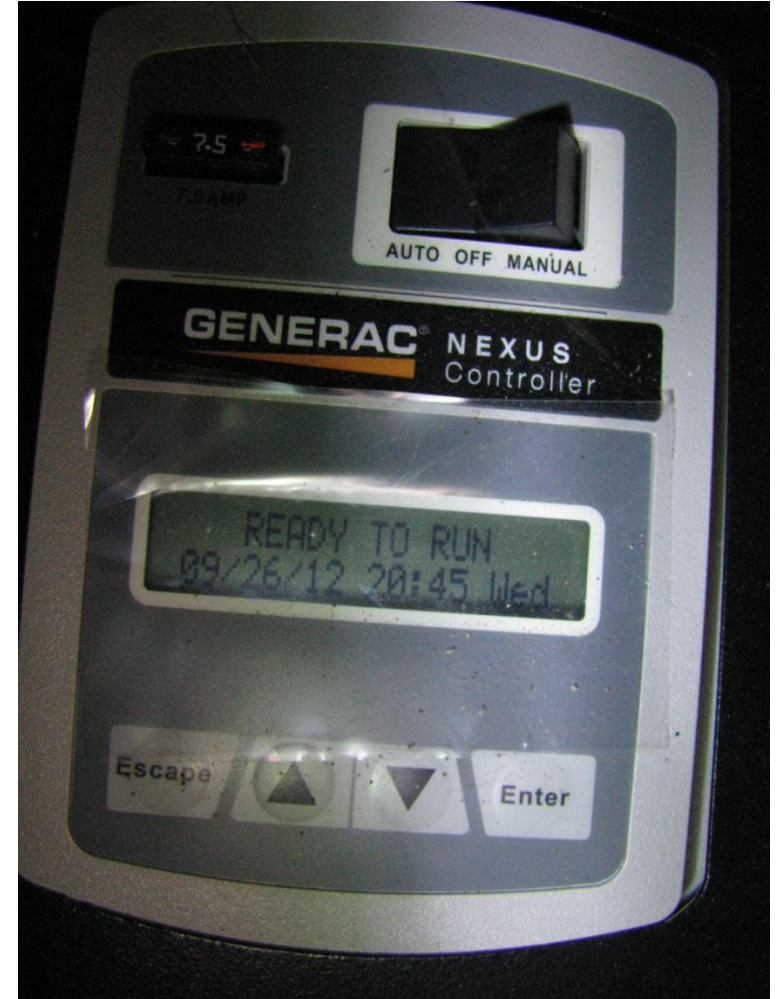
Operation

- **OFF**
 - Generator Control Switch = OFF (service generator)
- **Manual Transfer** (several trips between generator and cellar)
 - Both Utility and Generator Breakers OFF
 - Lever on transfer switch = GENERATOR
 - Generator Control Switch = MANUAL (start generator)
 - Generator Breaker ON
 - Power Supplied by Generator
 - Generator Breaker OFF
 - Lever on transfer switch = UTILITY
 - Generator Control Switch = OFF / AUTO (stop generator)
 - Utility Breaker ON
 - Power Supplied by Utility
- **Automatic Transfer . . .**
 - Generator Control Switch = AUTO
- **Weekly Auto Test**
 - Generator Control Switch = AUTO
 - Set for 10 am Saturday Mornings
 - 10 min generator run without power transfer

Automatic Transfer

- Utility Service Fails
 - Voltage below 80% nominal
 - 15 second delay
- Engine Start / Warmup – 10 second delay, up to 4 tries
- Generator Voltage Ready – Voltage 50% of nominal
- Transfer House to Generator
- Power Supplied by Generator During Outage
- Utility Service Restored
 - Voltage above 90% nominal
 - 15 second delay
- Transfer House to Utility
- Engine Cool Down – 60 seconds
- Engine Off
- Power Supplied by Utility Service

Generator Control Switch



Manual Transfer Switch

UTILITY SERVICE DISCONNECT

ON
OFF

GENETIC



WARNING To reduce the risk of electric shock or personal injury, DISCONNECT ALL SOURCES OF SUPPLY BEFORE SERVICING. AVERTISSEMENT - COUPER TOUTES LES SOURCES D'ALIMENTATION AVANT DE FAIRE L'ENTRETIEN ET LES RÉPARATIONS.	UTILITY
Manual Operation 1. To manually operate switch, attach handle to operating lever between solenoid coils. 2. Pull down lever to connect standby or push lever up to connect utility to load. 3. When servicing has been completed, be sure to remove handle from switch.	MANUAL OPERATING HANDLE SWITCH POSITION
	GENERATOR

WARNING To reduce the risk of electric shock or personal injury, DISCONNECT ALL SOURCES OF SUPPLY BEFORE SERVICING. AVERTISSEMENT - COUPER TOUTES LES SOURCES D'ALIMENTATION AVANT DE FAIRE L'ENTRETIEN ET LES RÉPARATIONS.	UTILITY
Manual Operation 1. To manually operate switch, attach handle to operating lever between solenoid coils. 2. Pull down lever to connect standby or push lever up to connect utility to load. 3. When servicing has been completed, be sure to remove handle from switch.	MANUAL OPERATING HANDLE SWITCH POSITION
	GENERATOR

0E3484-C

Operational Test

- Test Run
 - Ambient House Load 3KW
 - + 4 Stove Burners
 - + 2 Ovens
 - 67 Amps (85 rated max) 16KW Total
 - Voltage Normal and Stable at 121 VAC
- Real Outage: one Sunday – two outages
 - 10 minutes in the morning
 - 40 minutes in the evening
 - UPS systems kept computers, TV, Internet, Radios working during transfer gap (25 sec)

Maintenance

- Oil & Filter Changes
 - Change oil and filter After first 8 hours
 - Change oil and filter every 200 hours / 2 years thereafter
 - Inspect oil level every 24 hours / 1 month
- Air Cleaner change – every 500 hours / 2 years
- Spark Plug change – every 500 hours / 2 years
- Battery Check
 - Check charge every 6 mo
 - Check electrolyte level every 6 mo
- Tune Up – every 200 hours / 2 years
- General Cleaning / Inspection – as needed

MARS COMEX Operation

- Manual Cutover Possible but Not Practical
 - Generator Switch is in Generator Housing (outside)
 - Cutover Switch is in the Cellar (inside)
 - Cutover Switch Cannot be Manually Operated Under Load Will Cause Burnt Contacts
 - Automatic Operation is Within Milliseconds Will Avoid Burnt Contacts
 - Multiple Trips To and From the Generator are Required
 - Disruption to the Household
 - Too Bad there is No “Button” to Perform Manual Cutover When there is No Commercial Power Loss
- MARS Station Power Usage
 - Computer Only = 157 watts
 - Computer + Radio Receive = 309 watts
 - Computer + Radio Transmit = 646 watts (not including KW amplifier)
- Photos of 1500 VA APC UPS Display:



Conclusion

- The Halloween 2011 Storm will probably NEVER happen again!
(barn door now locked AFTER horses already escaped!) (8 Day outage)
- The Blizzard of 1978 left 3 feet of snow but no power outages!
- **Update after Storm Sandy (Oct 2012) – YES IT DID HAPPEN AGAIN !**
Fuel consumption: measured 75 gallons of propane for 56.75 hours operation
1.32 gallons per hour – if 350 usable gallons in tank, 265 hours or 11 days operating time!
- It happened again later on the very day of the presentation (17-Feb-2022, technically the 18th).
- **Empty Pockets: that's what credit cards are for!**
Actually, an 18 month interest free loan on Lowes Credit Card was \$500 / month.
Lowes prices have not inflated that much since 2011 (but hold your breath!)
Check their sub-contractors for installation prices.
There ARE less expensive options with portable generators and temporary hook ups: convenience vs cost.
- **Piece of mind: Priceless !**
- Field Day – Plan B when it Rains – Home Class 1E
- Tax Deduction? (Tax rules may have changed)
Support of USAF MARS emergency operations!
- There have been a number of power outages since 2012
varying in duration from several minutes to several hours
- Cutover to Emergency Power Without Commercial Power Loss
Is Difficult, and Not Practical to run emergency power for MARS COMEX or ARRL Field Day.
Too bad there is not a control for manual cutover to Emergency Power.
- Next Power Outage... ;-) ;-)
Turn on all flood lights, crank up Hi Fi,
roll out the Beer and BBQ, invite neighbors to party!